



## Fact Sheet 3000 Ton Rental Cooling Tower

### Introducing the VTECT-ID3000... The world's largest portable cooling tower

Specifically designed and built to meet the rigorous demands of the rental industry, the VTECT-ID3000 is the world's largest portable cooling tower – a best-in-class solution for cooling water limitations.

The VTECT-ID3000 rental cooling tower provides state of the art solutions to many common cooling water limitations. This 3,000 ton unit can be used as a stand alone solution or as part of a multiple unit configuration, meeting virtually any demand. Each VTECT-ID3000 can process up to 10,000 gpm of cooling water per unit. All units in the VTECT-ID family are suitable for use in Class I, Div. II areas.

We also offer complete application engineering, design and installation services, along with critical support accessories, including pumps, manifolds, steel and PVC Piping.

### Product Benefits

- **Direct Drive Fans** – Units have 20 direct drive fans that have unmatched reliability by eliminating the need for gear boxes, pulleys, and belts.
- **Automatic Temperature Control** – Custom PLC's enable our ability to maintain temperature tolerances.
- **Enclosed Fan Motors** – Prevent water penetration, extend motor life and performance.
- **Superior Components** – Stainless steel, fiberglass and PVC provide unmatched corrosion control.

### Other Unique Benefits

- Self-leveling capability allows faster set-up with little or no site preparation.
- Continuously welded seams prevent water penetration extending unit life and performance.
- Expandable air inlet technology allows units to be transported at legal height and then easily expanded on-site to maximize cooling capacity.
- Units are designed to be loaded and positioned at customer facilities without use of a crane or a forklift.
- Units are transportable on a single, permitted truckload for reduced shipping time and cost.

### Typical Applications

#### Planned Outages:

When operations are shut down to implement improvements and perform maintenance, temporary cooling towers and pumps can maintain cooling for critical areas of the process that must remain operational.

#### Emergency Cooling:

Unforeseen events can leave critical cooling systems inoperable. Temporary cooling towers can be mobilized to quickly restore operations, resulting in reduced downtime.



### Contingency Planning:

Blue-Stream can offer contingency planning services to formulate a customized emergency response procedure.

### Supplemental Cooling:

Inadequate cooling water supplies often can curtail productivity. The use of temporary cooling can maximize your operational capabilities without the need for capital investment.

### Environmental Compliance:

Existing cooling systems are sometimes not capable of meeting changing regulatory requirements. Our unique cooling systems offer a wide variety of innovative solutions to help maintain compliance and avoid possible penalties and loss of production.

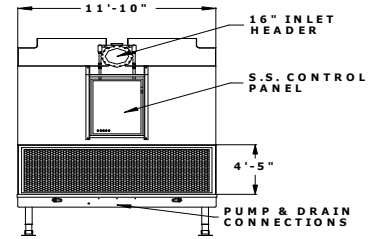
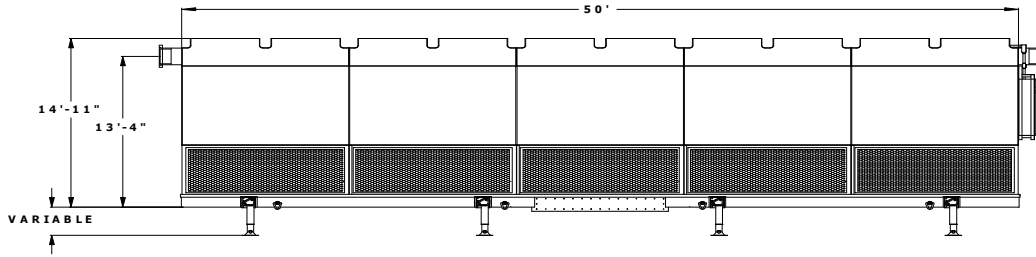
Blue-Stream Services, LLC  
New Iberia, LA (HQ) - Baton Rouge, LA - Houston, TX  
Orlando, FL - Atlanta, GA  
866.939.2583

[www.bluestreamservices.com](http://www.bluestreamservices.com)

**24/7/365 Response ... 866.939.BLUE**



# Fact Sheet 3000 Ton Rental Cooling Tower



## Equipment Description

Our portable cooling towers are designed and manufactured to provide the most cooling possible while maintaining easy portability. These units are completely self-contained and can be up and running within hours of arriving on the job site. If needed, portable pumping units and reservoir tanks can also be provided.

## Mechanical Connections

Inlet (Hot Water) 1 – 16" Diameter Flange

Outlet (Cold Water) Up to 7 – 12" Diameter Flange

Make-up Water 2 – 2" Diameter Flange

Overflow 2 – 4" Diameter FPT/Man.

Chemical (Optional) 1 – 2" Diameter FPT/Man.

## Physical Data

Model VTECT-ID3000

Length 50'

Width 11' - 10"

Max. Height 14' - 11"

Shipping Weight 63,000 lbs.

Operating Weight 87,000 lbs.

Design Flow Range 5,000-10,000 GPM

For process applications, Btu's/hour vary, depending on operating conditions such as wet bulb temperature, approach temperature and range. For more information, please contact Blue-Stream Services 24/7/365 at **866.939.2583**.

## Electrical

Motors 20 – 15 HP

Total HP/F.L. Amps 300/410

Phase/Hz/Volts 3/60/460

Enclosure TEAO

Speed 1200 RPM

Frame 256T

## Materials/Construction

Basin Steel w/ continuously welded seams, marine epoxy and urethane lining.

Structure FRP with ultraviolet inhibitors and fire retardant additives.

Mounting Brackets Stainless steel/FRP

Fans Four fans per cell. Fixed blade aluminum or variable pitch FRP.

Electrical Classification NEMA 4X - Class I, Div II capable starter panel, fittings and TEAO motors.

Water Distribution Enclosed PVC/FRP header system with polypropylene clog-resistant nozzles.

Heat Transfer Media High efficiency/low fouling combination PVC cellular sheet.

Fill Supports FRP structure with stainless steel support clips.

Drift Eliminators High efficiency PVC cellular sheet.

Eliminator Supports Stainless steel/FRP.

Blue-Stream Services, LLC  
New Iberia, LA (HQ) - Baton Rouge, LA - Houston, TX  
Orlando, FL - Atlanta, GA  
866.939.2583

[www.bluestreamservices.com](http://www.bluestreamservices.com)

**Blue-Stream Services... Home of the World's Largest Portable Cooling Towers**