

The BSS 500-SS... 500 Nominal Tons in a rugged, Stainless Steel design!

The BSS 500-SS stainless steel portable cooling tower was designed and built specifically for the rental industry. This durable unit represents another "best-in-class" solution from Blue-Stream Services for overcoming cooling water supply limitations.

Rated at 500 nominal tons, the BSS 500-SS can be used as a single unit solution; as two individual 250 ton units; or in multiple unit configurations to meet most any cooling water need. Each BSS 500-SS rental cooling tower can process up to 2,650gpm of cooling water and is transportable without a permit on a single tractor trailer rig and can be offloaded with a forklift.

All BSS portable cooling tower units are suitable for use in Class I, Div. II areas.

- ◇ *Planned Outages*
- ◇ *Emergency Cooling*
- ◇ *Contingency Planning*
- ◇ *Supplemental Cooling*
- ◇ *Environmental Compliance*



Benefits

- **Weather-Proof Fans** – Twin TEFC fans provide safety and reliability with specially designed safety shields and multiple stranded "V Belts".
- **Automatic Temperature Control** – enables the ability to maintain close temperature tolerances.
- **Enclosed Fan Motors** – TEFC Motors prevent water penetration, extend motor life and performance.
- **Superior Components** – Stainless steel / Galvanized with G-235 Zinc coating.
- **High Performance Fill Media** allows for excellent performance, a wide ranges of acceptable temperatures, and industry leading cold water approach temperatures.
- **Stainless Basin and Components** make for an extremely durable package with minimal potential for corrosion and oxidation.
- **Continuous Welds** along all basin seams prevent basin leakage, increase performance, and extend the life of the unit.

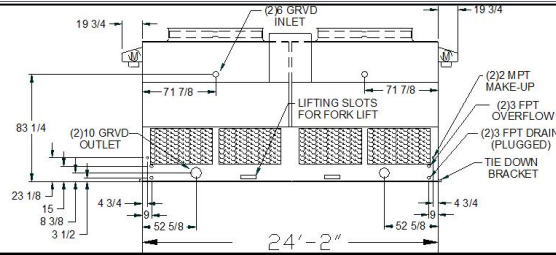
Blue-Stream Services

www.bluestreamservices.com

866.929.BLUE 866.939.2853

New Iberia, LA ◇ Baton Rouge, LA ◇ Houston, TX ◇ Dallas, TX

BSS 500-SS Portable Cooling Tower Unit Specifications



Equipment Description

Our portable cooling towers are designed and manufactured to provide the most cooling possible while maintaining easy portability. These units are completely self-contained and can be up and running within hours of arriving on the job site. If needed, portable pumping units and reservoir tanks can also be provided.

Pipe Connections

Inlet (Hot Water)	2 - 10" Diameter Flange	Make-up Water	2 - 2" Diameter Flange
Outlet (Cold Water)	2 - 6" Diameter Flange	Overflow	2 - 2" Diameter FPT/Man.

Dimensions & Weight

Model	BSS 500-SS (Evapco AT28-624S)	Shipping Weight	8,300 lbs.
Length	24' - 2"	Operating Weight	15,600 lbs.
Width	7' - 10"	Design Flow Range	500-2,650 GPM
Max. Height	10' - 6"		

Electrical Information

Motors	2 - 25 HP	Total HP/F.L. Amps	50 / 70
Phase/Hz/Volts	3/60/480	Speed	1200 RPM
Enclosure	TEFC	Basin Heaters	2 x 6kW

Materials of Construction

Basin	304 Stainless Steel w/ continuously welded seams, and marine epoxy.
Structure	304 Stainless Steel w/ Hot Dip Galvanized with G-235 Zinc Coating.
Mounting Brackets	304 Stainless Steel
Electrical Classification	NEMA 4X-Class I, Div II capable starter panel, fittings and TEFC motors.
Water Distribution	Enclosed PVC header system with ABS clog-resistant nozzles.
Heat Transfer Media	High efficiency/low fouling combination PVC cellular sheet.
Fill Supports	304 Stainless Steel.

*For process applications, Btu's/hour vary, depending on operating conditions such as wet bulb temperature, approach temperature and range. For more information, please contact Blue-Stream Services 24/7/365 at **866.939.2583**.*